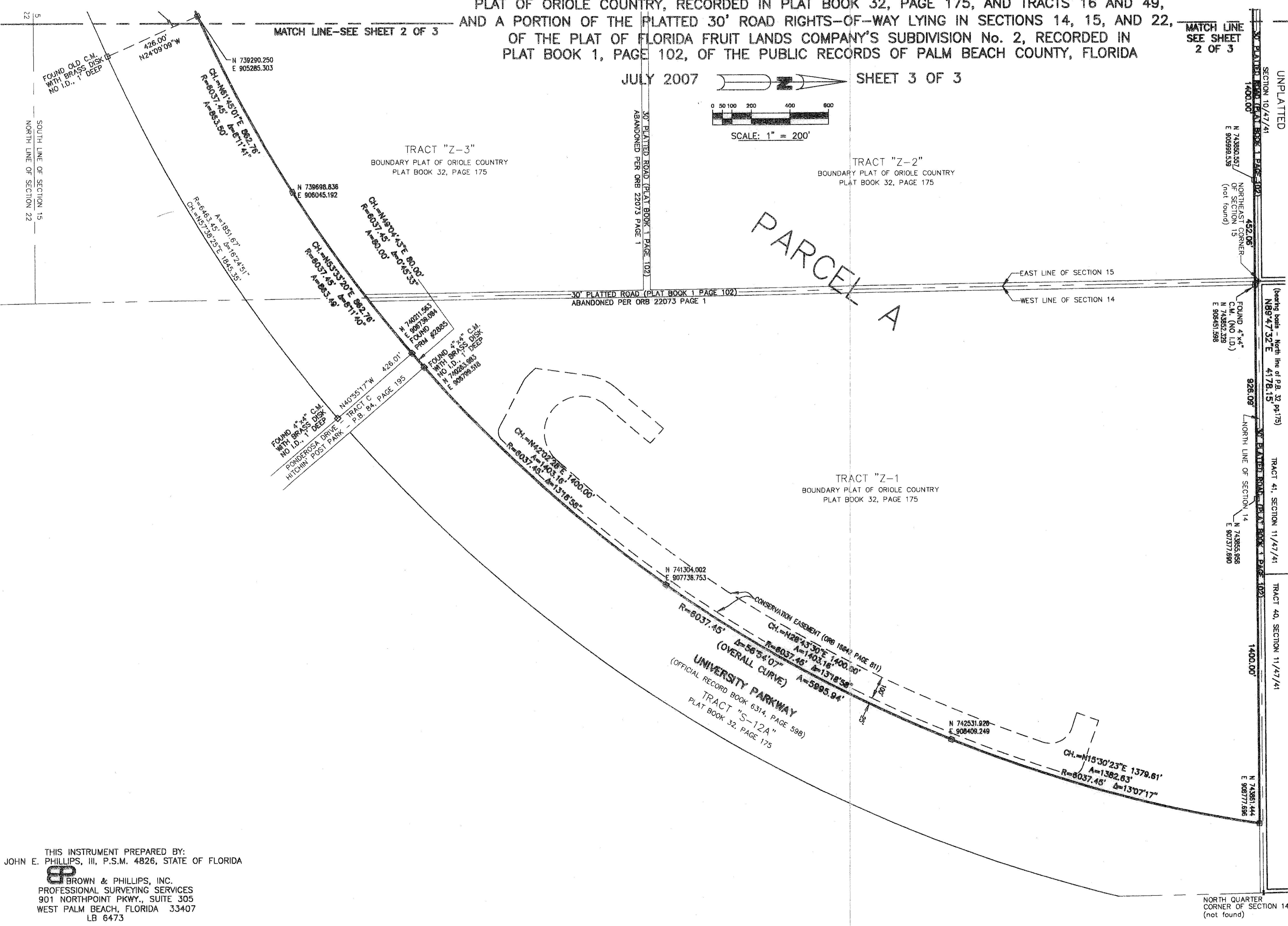
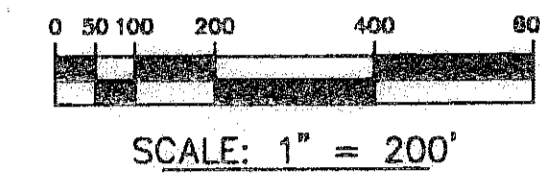


SOUTH COUNTY REGIONAL PARK-PARCEL A

LYING IN SECTIONS 14, 15, AND 22, TOWNSHIP 47 SOUTH, RANGE 41 EAST, PALM BEACH COUNTY, FLORIDA, BEING A REPLAT OF TRACTS Z-1, Z-2, Z-3, Z-4, Z-5, AND Z-6, OF THE BOUNDARY PLAT OF ORIOLE COUNTRY, RECORDED IN PLAT BOOK 32, PAGE 175, AND TRACTS 16 AND 49, AND A PORTION OF THE PLATTED 30' ROAD RIGHTS-OF-WAY LYING IN SECTIONS 14, 15, AND 22, OF THE PLAT OF FLORIDA FRUIT LANDS COMPANY'S SUBDIVISION No. 2, RECORDED IN PLAT BOOK 1, PAGE 102, OF THE PUBLIC RECORDS OF PALM BEACH COUNTY, FLORIDA

JULY 2007 SHEET 3 OF 3



MATCH LINE
SEE SHEET
2 OF 3

UNPLATTED
SECTION 10/47/41
30' PLATTED ROAD (PLAT BOOK 1, PAGE 102)
1400.00'
N 74393.957
E 90399.538
(not found)

452.06'
NORTH-EAST CORNER
OF SECTION 15
(not found)

FOUND 4" x 4" C.M. (NO I.D.)
N 74352.329
E 90645.988

928.02'
NORTH LINE OF SECTION 14
N 74393.958
E 90377.890

1400.00'
TRACT 41, SECTION 11/47/41
TRACT 40, SECTION 11/47/41

1400.00'
N 74393.958
E 90377.890

N 74393.958
E 90377.890

N 74393.958
E 90377.890
NORTH QUARTER
CORNER OF SECTION 14
(not found)

THIS INSTRUMENT PREPARED BY:
JOHN E. PHILLIPS, III, P.S.M. 4826, STATE OF FLORIDA
BP
BROWN & PHILLIPS, INC.
PROFESSIONAL SURVEYING SERVICES
901 NORTHPOINT PKWY., SUITE 305
WEST PALM BEACH, FLORIDA 33407
LB 6473